



TIPS AND TRICKS

How To Use The XL Reporter - Get Other Data Function

Get Other Data is a useful function that you can use in order to get data from modules/tables that are not supported by XL Reporter's current integration (meta data) to your ERP system. Here are the steps to use the **Get Other Data** function. We use the demo database ABC Company for this example.

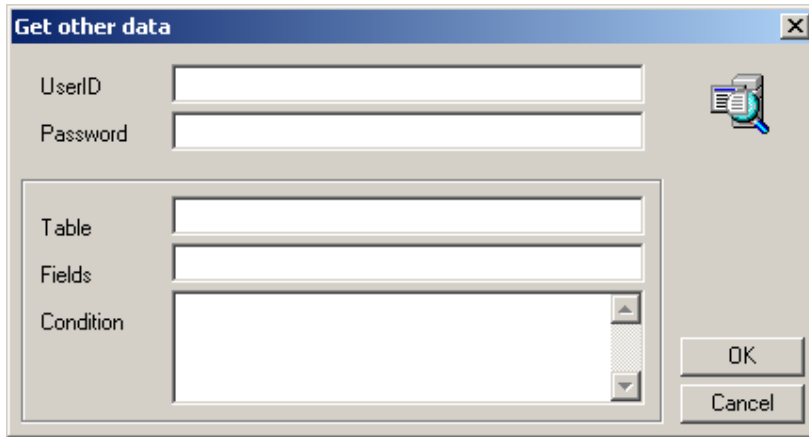
1. Start XL Reporter and go to the Report Composer.
2. Go to SOP tab and drag down the "Customers" dimension.
3. Right click on the customers dimension and "Add more attributes" and choose Customer Name.
4. Drag down the "Items" dimension and "ExtendedCost" and refresh the report.
5. Drag down "Customers" into the Selections field and choose "AARONFIT001" (This is just to limit the amount of data).
6. Your report should look like this now.

The screenshot shows the XL Reporter Report Composer interface. The 'Report Composer' window is open, displaying a report with the following columns: Customers, Items, and ExtendedCost. The report data is as follows:

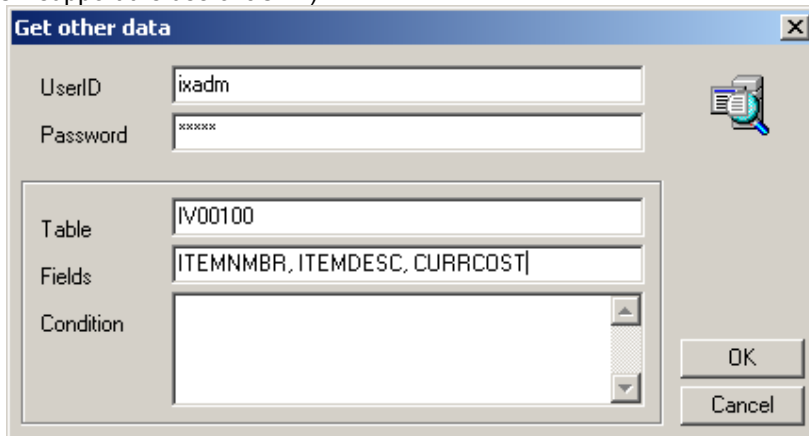
Customers	Items	ExtendedCost	
AARONFIT0001	Aaron Fitz Electrical	4.5HD	738.00
AARONFIT0001	Aaron Fitz Electrical	401 IDC	1,960.00
AARONFIT0001	Aaron Fitz Electrical	ACCS-HDS-1EAR	77.18
AARONFIT0001	Aaron Fitz Electrical	ACCS-HDS-2EAR	2,069.00
AARONFIT0001	Aaron Fitz Electrical	ACCS-RST-01WH1	22.75
AARONFIT0001	Aaron Fitz Electrical	ANSW-ATT-1000	3,023.79
AARONFIT0001	Aaron Fitz Electrical	ANSW-IBS-1450	5,075.25
AARONFIT0001	Aaron Fitz Electrical	ASMS-LBR-0001	0.00
AARONFIT0001	Aaron Fitz Electrical	BA100G	1,414.00
AARONFIT0001	Aaron Fitz Electrical	FA05-CAN-9000	4,200.00
AARONFIT0001	Aaron Fitz Electrical	FA05-OP-2100	2,637.15
AARONFIT0001	Aaron Fitz Electrical	HA100G	1,145.00
AARONFIT0001	Aaron Fitz Electrical	HW4W-ASP-0100	35,000.00
AARONFIT0001	Aaron Fitz Electrical	HW4W-CAS-0001	34,456.22
AARONFIT0001	Aaron Fitz Electrical	HW4W-FQC-0001	379.96
AARONFIT0001	Aaron Fitz Electrical	HW4W-4RC-4866	3,379.25
AARONFIT0001	Aaron Fitz Electrical	HW4W-SRG-0001	373.00
AARONFIT0001	Aaron Fitz Electrical	INST-TWO-0001	0.00
AARONFIT0001	Aaron Fitz Electrical	INSTALLATION	0.00
AARONFIT0001	Aaron Fitz Electrical	PHON-PAN-2315	4,197.00
AARONFIT0001	Aaron Fitz Electrical	REPR-TWO-0002	0.00
AARONFIT0001	Aaron Fitz Electrical	SERVICE PLAN - WEBSERVER	0.00
AARONFIT0001	Aaron Fitz Electrical	SERVICE WEBSERVER	0.00
AARONFIT0001	Aaron Fitz Electrical	SPLN-TWO-0001	0.00
AARONFIT0001	Aaron Fitz Electrical	SPLN-TWO-0002	0.00
AARONFIT0001	Aaron Fitz Electrical	TRAD-2000	0.00
AARONFIT0001	Aaron Fitz Electrical	WSE1-FQC-0001	5,403.36
AARONFIT0001	Aaron Fitz Electrical	WEBSERVER-2000	0.00

7. Bring the report over to the Advanced Report Builder (Excel) and format the report anyway you want.

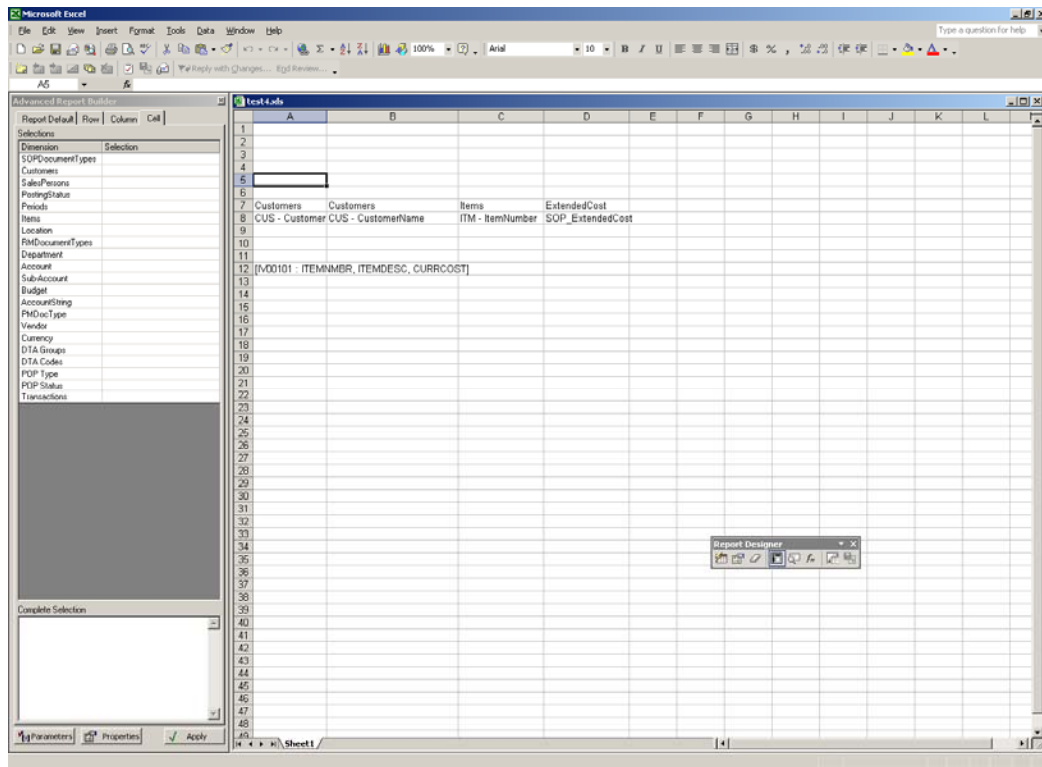
- 8. Click Cell A12.
- 9. Click on the Formula Builder (Fx button on the floating toolbar) and go to the Functions tab.
- 10. Click to expand "Other" and double click "Get Other Data" and the screen below pops up.



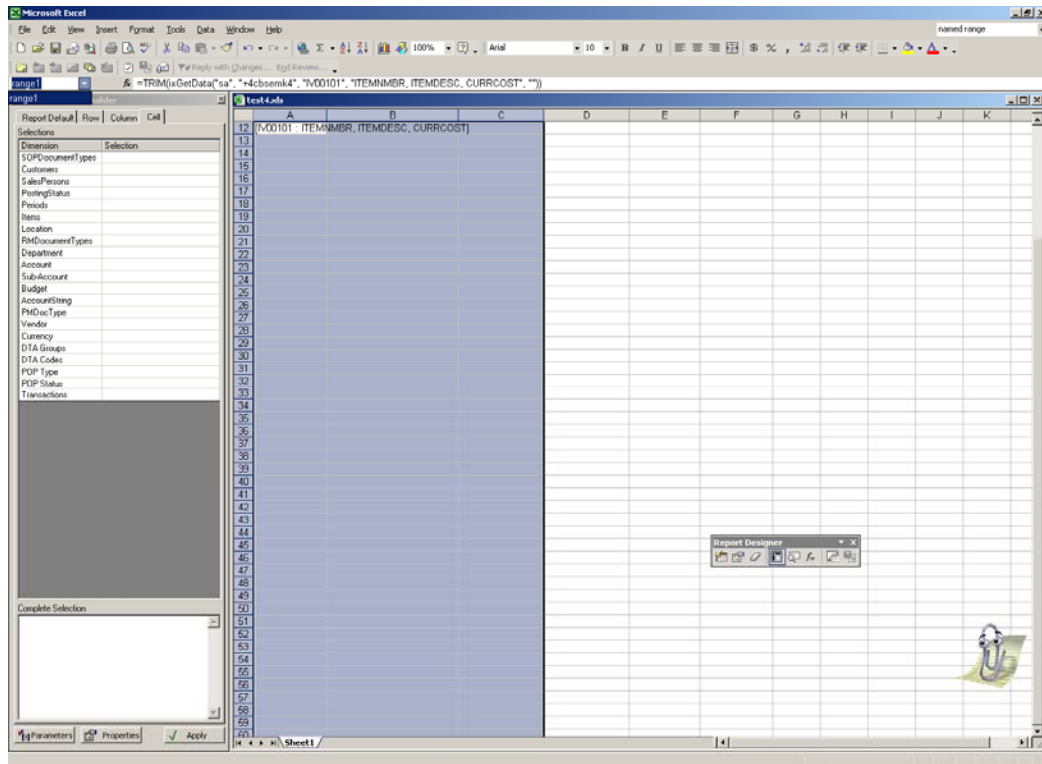
- 11. Use ixadm for the UserID and its password. (or your regular UserID/Password)
- 12. Type in the name of the table (or the view) and fields you want to get. (Note: Get Other Data does NOT support the use of JOIN)



13. Click OK and close the Formula Builder screen.



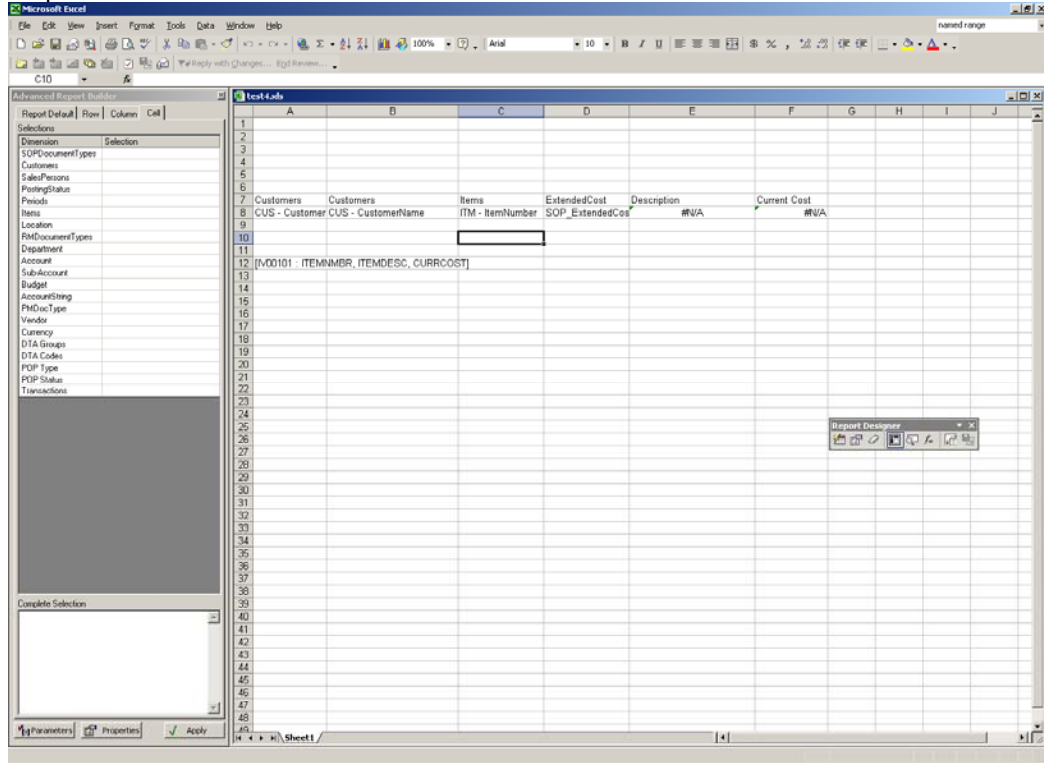
14. Type in "Description" in Cell E7 and "Current Cost" in Cell F7
15. In Cell C8, you have the following formula:
`=ixDimGet("ITM", "ItemNumber")`
 Change this into
`=TRIM(ixDimGet("ITM", "ItemNumber"))` by adding TRIM and parentheses.
- This is to remove extra white spaces.
16. Do the same in Cell A12 and change it into
`=TRIM(ixGetData("sa", "+4cbsemk4", "IV00101", "ITEMNMBR, ITEMDESC, CURRCOST", ""))`
17. Highlight all the cells from A12 through C170 and go to the Name Box, which is located at the upper left corner of the Excel screen and name it "range1" for example. (or highlight all the cells from A12 through C170 and go to Insert->Name->Define and name it range1 and click OK)



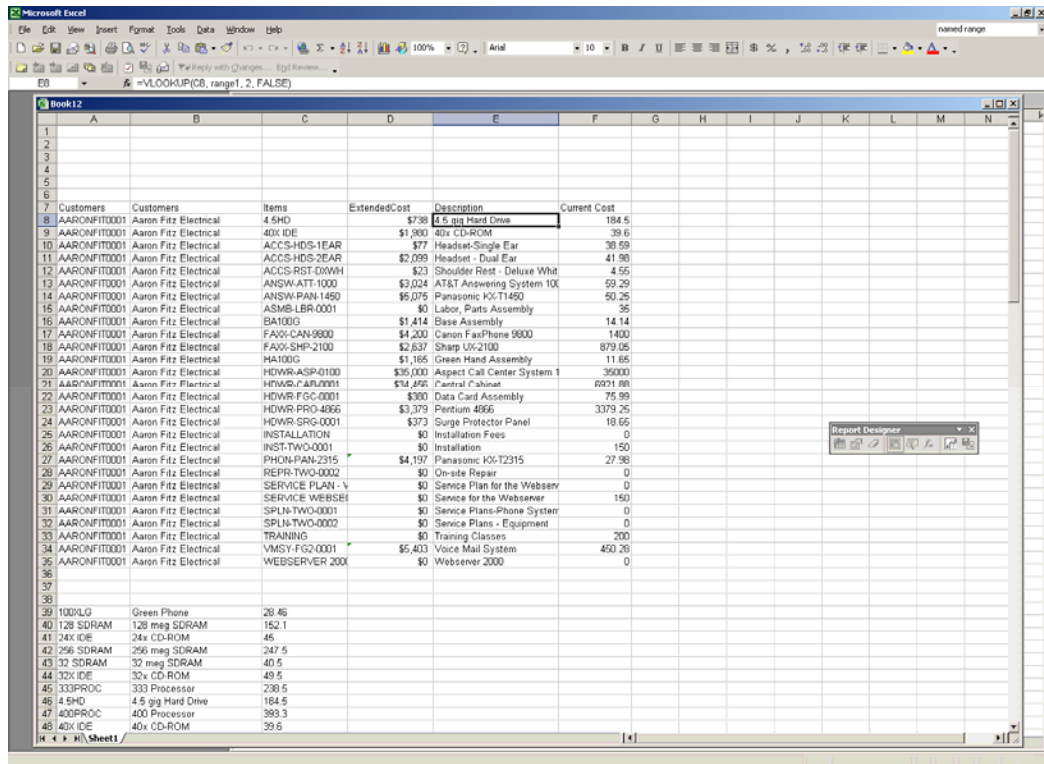
Now we are ready to use VLOOKUP function (this Excel function is a great way to automatically pull data from the section of your report that is using the Get Other Data function, and match it with the appropriate transactions pulled in with your standard XL Reporter formulas)

18. Go to Cell E8 and type in the following formula:
`=VLOOKUP(C8, range1, 2, FALSE)`
19. Likewise, type in the following formula in F8,
`=VLOOKUP(C8, range1, 3, FALSE)`
20. One possible problem with this VLOOKUP function is that if there is no match up, the formula would return #N/A. In order to avoid this, you need to combine IF statement, ISERROR function as well as VLOOKUP function. Change the formula in Cell E8 into
`=IF(ISERROR(VLOOKUP(C8, range1, 2, FALSE)), "", VLOOKUP(C8, range1, 2, FALSE))`
21. Likewise change the formula in F8 into
`=IF(ISERROR(VLOOKUP(C8, range1, 3, FALSE)), 0, VLOOKUP(C8, range1, 3, FALSE))`

Your report should look like this now:



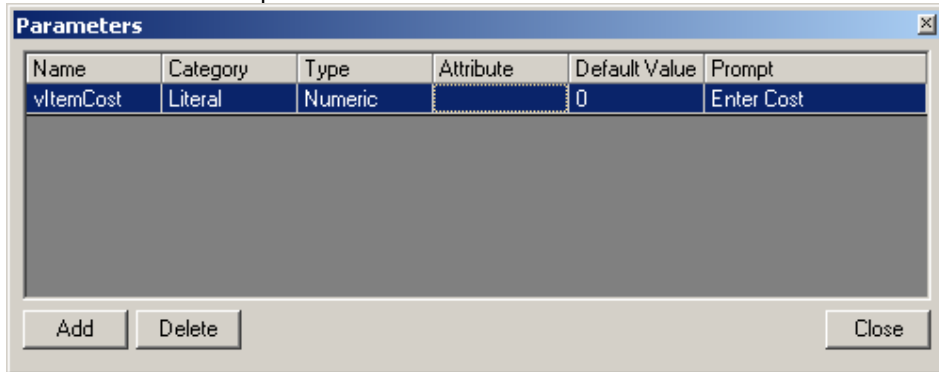
- 22. Let's run the report and you see how you can get data that are not supported by XL Reporter's pre-built integration layer by using "Get Other Data" and the VLOOKUP function.



You

can also use parameters in Get Other Data to exclude some data.

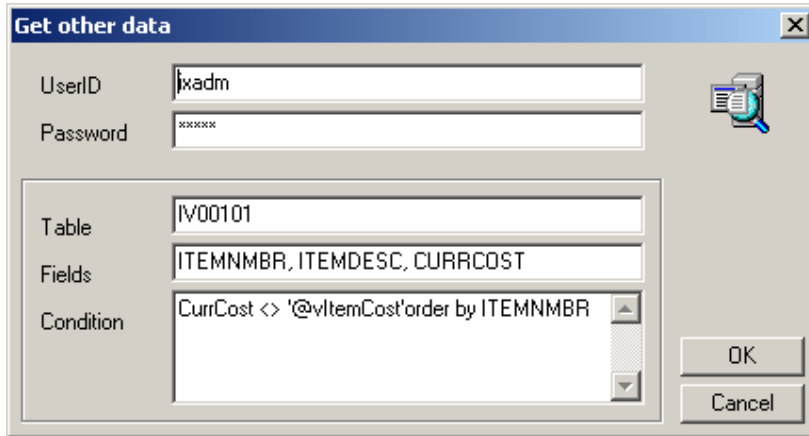
23. Click Parameters and create a parameter as below.



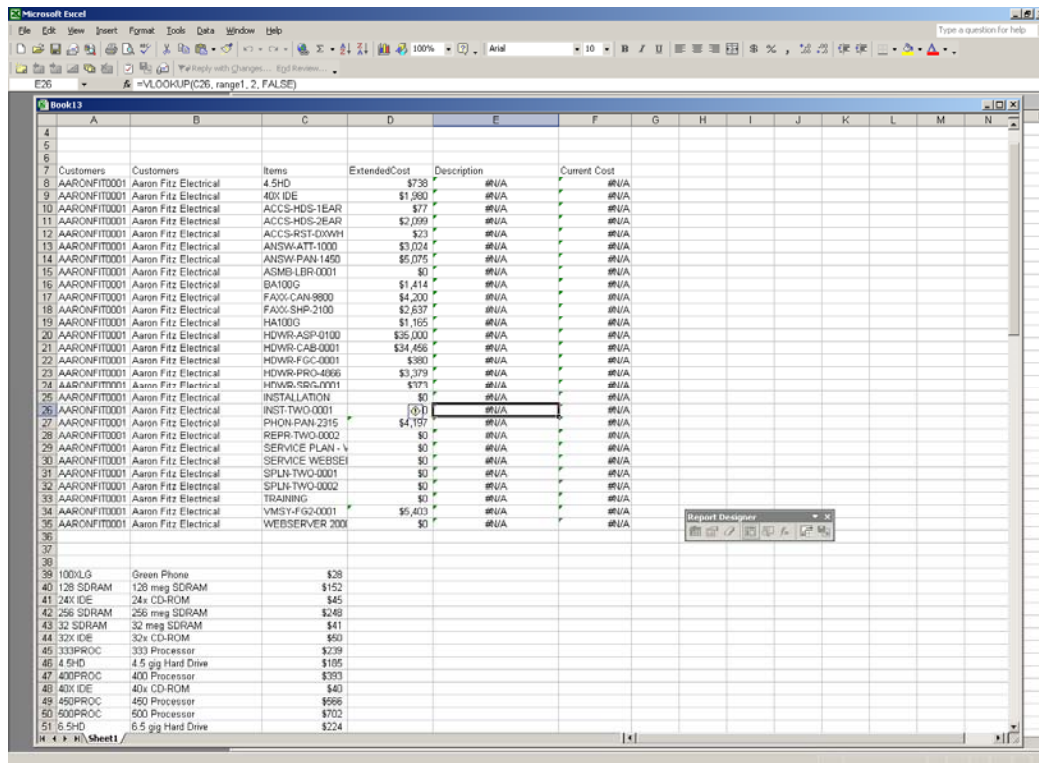
Please note that you have to use "Literal" under Category.

24. Click the Formula Builder again and go to Functions tab and open Get Other Data screen. Under Condition, type in CurrCost <> '@vItemCost'

25. You can also specify the order in which the data is sorted. In the second line, type in order by ITEMNMBR



26. Let's run the report again and you notice that items with 0 cost are excluded this time and the data is sorted by Item Number (ITEMNMBR).



Note: You can also retrieve data from views as well as tables