



SAP® Business One

➔ Matrix One

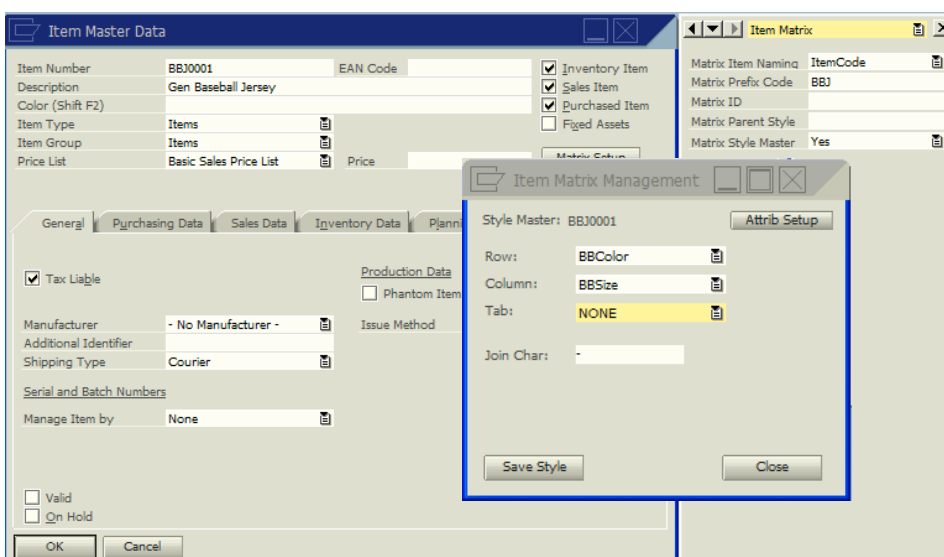
Matrix One is a powerful add-on module to the SAP Business One™ application suite. It extends the customer order, and purchase order capabilities of Business One to allow users the ability to easily apply color, style, size and any other user defined attributes to items.

Product Overview

Standard customer and purchase order entry systems fall short of satisfying the requirements of many industries. This is especially true for apparel, footwear, furniture, cabinet, textile, or any other industry where multiple attributes are used to define an item or SKU (Stock Keeping Unit). Matrix One defines multiple attributes such as color, style, size to be associated with items which can be filled out on the sales order.

Because Matrix One Pro has been developed using the Standard SAP Business One Development Toolkit, it works directly inside the Business One system.

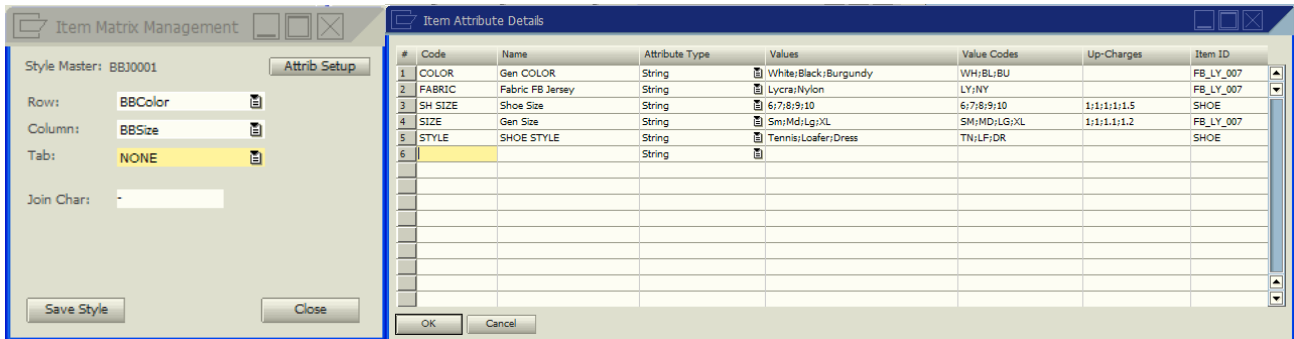
Users can define a three dimensional matrix for each of their SKUs using the “Item Matrix Management Window”, as illustrated below left. Once a user has entered the attribute name, attribute type, and the possible values for the item and saves the item matrix definition, the Matrix One module



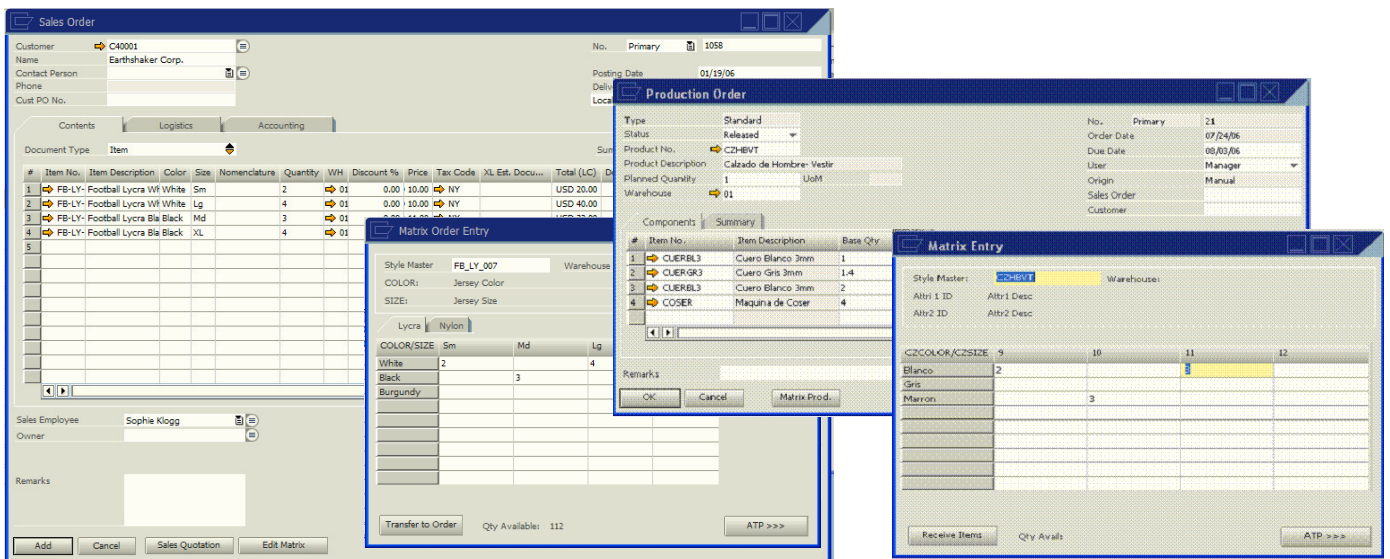
Product Features

- ◆ **Seamless Integration with SAP Business One™**—Matrix One is completely integrated into the standard Business One data storage framework, enabling all standard Business One functions such as: order placement, picking, packing, shipping and add-on capabilities such as WMS and eCommerce to operate as standard “off-the-shelf” functions.
- ◆ **Automatic Prompting During Order Entry**—Items “flagged” as Matrix items, automatically present the Matrix Attribute screen to the order entry user and allow the order taker to automatically save the attributes in the standard Business One order line.
- ◆ **Flexible, user defined item attribute definition**—Business One users can define any item attributes desired in the multi-dimensional matrix. Typical attributed include color, style, and size, but are not limited to those examples.
- ◆ **Matrix One for Production** —For companies who need to create a production order based on a sales order created with the matrix. A style master has a BOM consisting of all possible raw materials that can go into the finished product. When a production order is complete, all the child items (issuing the raw materials, receiving in the actual child items and adjusting out the style master) by receiving completed quantities via the Matrix.
- ◆ **Pre-Pack Functionality**—Size and quantity templates used to automatically populate the Matrix order form with pre-defined quantity values for corresponding sizes.

generates an “Item Attribute Details” screen, as seen below right. Once specific items in Business One have been flagged in the item master as matrix classified items, the Matrix One order entry screen is displayed and the Business One order entry user will be prompted to enter the customer’s desired attributes (such as: color, style, size, etc.) and appended to the order line. The “transfer to order” function then



takes the entered quantities, and creates individual line items / SKUs on the sales order, where the orders are then processed through the normal Business One order processing function. Matrix One can also generate production orders from the matrix-generated sales orders, ensuring the selected attributes of a given product style will be used in the manufacturing process of the items specified in Matrix One. When a production order is completed, the user will be able to receive all the child items from a single screen.



Navigator Business One Solutions



Utah Office
 Navigator Business Solutions
 170 S Main Street
 Pleasant Grove, UT 84062
 Tel: 801.642.0123

Arizona Office
 Navigator Business Solutions
 4728 W. Whitten Street
 Chandler, AZ 85226
 Tel: 602.635.3766

California Office
 Navigator Business Solutions
 5201 Great American Pkwy, Suite 320
 Santa Clara, CA 95054
 Tel: 408.335.0262

Colorado Office
 Navigator Business Solutions
 6565 South Dayton Street
 Englewood, Colorado 80111
 Tel: 720.259.1253

Nevada Office
 Navigator Business Solutions
 8275 S. Eastern Ave, Suite 200
 Las Vegas, NV 89123
 Tel: 702-289-4194

www.NB1S.com